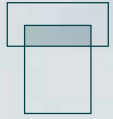




Tatraglass

Authentic
Handmade
Heritage
Restoration
Glass





Tatraglass

— AUTHENTIC HERITAGE —



CHATSWORTH HOUSE IN DERBYSHIRE HAS TATRAGLOSS MOUTH BLOWN AND HERITAGE DRAWN RESTORATION GLASS

Founded with the vision to make historic homes and buildings look original with the use of period correct glass - Tatraglass is passionate to make every home look its best.

Now the UK's largest supplier of restoration glass, with close ties to traditional glass manufacturers across Europe, we offer an unrivalled range of specialist restoration glass covering every period.

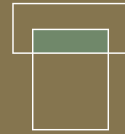
Acknowledged by relevant historical and planning bodies, as an authentic substitute to maintain the aesthetic of façades for period properties, our Tatraglass restoration glass has been supplied to Grade I and II listed properties, iconic country estates, Royal Palaces, National Trust, English Heritage and unlisted properties up and down the UK.

Our range of antique and heritage restoration glass, all made using the traditional methods, comprises of three Heritage glass sheets; Heritage Mouth Blown, Heritage drawn 3 & 3+ and Heritage Drawn 4.5, all supplied in the following ways:

- **CUT TO REQUIRED SIZE OR SHAPE**
- **HERITAGE ECO LAMINATED** Paired with high thermal rated safety glass with UV filtering to help protect fabrics from fading
- **HERITAGE DOUBLE GLAZED** slim, low sight-line units

With our **Heritage ECO Laminated** and **Heritage Double Glazed** ranges, where our heritage glass is paired with Low E high thermal rated safety glass with UV filtering to help protect fabrics from fading, giving you a choice of conservation grade solutions that will best fit the window frames in your restoration project, while providing excellent levels of thermal insulation, UV protection as well as offering acoustic and safety benefits.

Our expert team will guide you to the correct product for your building and window frames, as well as guide you to the information you'll need to share with your Conservation Officer in your local Planning Department.



Tatraglass

HERITAGE MOUTH BLOWN

The authenticity of Heritage Mouth Blown cylinder glass, with its mild surface distortions, and an occasional bubble or ream – features only found in original mouth-blown and antique window glass – is due to the crafts-people’s careful preservation of the mouth-blown glass making process, ensuring the finest quality for restoring pre-Victorian buildings. Our Cylinder glass is a suitable alternative to Crown Glass (which is no longer made).

We supply cut to size and shape, from a single pane to a whole building (like in this Buxton University Building shown here, for example). This glass is unquestionably the finest in Europe for authentic sash window glass.

For the best thermal efficiency, we can also pair our Heritage Mouth Blown cylinder glass with a modern Low E glass sheet, to create Heritage ECO Laminated sheets or make into slim, low sightline Heritage Double Glazed units.

Suitable for installing in stone mullion, steel and wooden window frames, we will advise you of the correct glazing choices for your project. We’re here to help you to get the correct glazing solution for your project, so please contact our expert team.

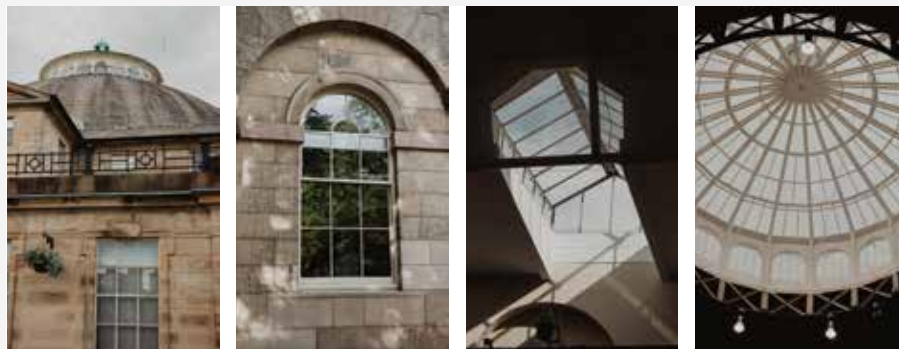
Buxton University, the former Royal Devonshire Hospital

 HERITAGE MOUTH BLOWN
ECO LAMINATED

Laminating our Heritage Mouth Blown glass with Low E glass, gives environmental benefits of lowering heat loss, whilst being classified as single (monolithic) glazing by planning authorities, and offers UV filtering to protect fabric and artefacts from harmful rays.

Fitting into the narrowest of window rebates, Heritage Mouth Blown ECO Laminate is ideal for Pre-Victorian properties. Being lightweight, sash mechanisms can be retained, maintaining the authentic historic glass texture externally while reducing heat-loss, and cutting energy bills.

When using Laminated glass in sash window frames, it is important to check the weights as they may need to be increased within the frame to allow the window to work correctly.



 HERITAGE MOUTH BLOWN
DOUBLE GLAZED

Our Heritage Mouth Blown Double Glazed units have the same benefits and characteristics of our ECO Laminate, with the added benefit of even better protection against heat loss, which is achieved using gas fill to the unit.

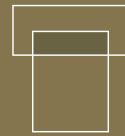
A slimline conservation grade Double Glazed unit, measuring in at a minimum of 10mm, is suitable for narrow rebate windows whilst retaining the external appearance of period glass.

Suitable for installing in steel and wooden window frames. When using Double-Glazed glass units in sash window frames, it is important to increase the weights within the frame to allow the window to work correctly.

Please speak to our expert team for advice on fixing methods, and use of the correct putty, which we also supply.

01509 235387
contact@tatraglass.co.uk

PRODUCT	DETAILS	SUITABLE FOR
HERITAGE MOUTH BLOWN CYLINDER SHEET	Thickness: nominally 3mm Thermal Rating: Ug = 5.6 W/m ² K	Pre-Victorian
HERITAGE MOUTH BLOWN CYLINDER ECO LAMINATED	Thickness: 6.8mm Thermal Rating: Ug = 3.6 W/m ² K	Pre-Victorian
HERITAGE MOUTH BLOWN CYLINDER DOUBLE GLAZED	Thickness: from 10mm Thermal Rating: Ug = 1.5 W/m ² K	Pre-Victorian



Tatraglass

HERITAGE DRAWN

With three base products in this range all having an irregular surface, this glass is made by the traditional Fourcault method. Drawn glass offers the charm of restoration glass in larger sheet dimensions.

Heritage Drawn 3 has mild movement in its surface

Heritage Drawn 3+ has more visual movement in its surface

Heritage Drawn 4.5 has mild movement in its surface but can also be can be toughened to meet safety standards

Our glazing is suitable for installing in stone mullion, steel, leaded windows (as seen in the main picture here in a building in Knightsbridge, London) and wooden window frames. We will advise you of the correct glazing choices for your project.

Ideal for the restoration of construction work dating from post Victorian.

As the name suggests, this glass has an average thickness of 3mm or 4.5mm, making it light enough to use in traditional window structures.

As well as sash and fixed window applications, Heritage Drawn 3, 3+ and 4.5 can also be used to protect precious, leaded glazing from the elements and other adverse environmental conditions.

55-91 Knightsbridge, London



Our ECO Laminated is achieved by pairing the Heritage Drawn glass of your choice with a Low E glass, adding extra environmental benefits of thermal values and UV protection, whilst still achieving a single pane (monolithic) glazing, which is helpful in conservation areas and where a building is Listed.

Fitting into the narrowest of window rebates, Heritage Drawn ECO Laminated is ideal for Victorian and post-Victorian properties. Lightweight, allowing sash mechanisms to be retained, keeping the period aesthetics to the facade and the authentic historic glass texture, while increasing acoustic and security benefits, reducing heat loss, and cutting energy bills.

It is important to check the weights in sash windows as they may need to be increased within the frame to allow the window to work correctly.

Please speak to our expert team for advice on fixing methods, and use of the correct putty, which we also supply.

01509 235387
contact@tatrerglass.co.uk



Our Heritage Double Glazed range has the added benefit of even better protection against heat loss, which is achieved using gas fill to the unit. As a slim, low sight-line conservation grade Double Glazed unit, starting from 10mm thick, it is suitable for narrow rebate windows while retaining the external appearance of period glass.

Heritage Drawn 3, 3+ and 4.5 Double Glazed units are available from 10mm thick and are suitable for installing in steel and wooden window frames of Victorian and post-Victorian buildings.

We are also able to make shaped Double Glazed units.



PRODUCT	DETAILS	SUITABLE FOR
HERITAGE DRAWN SHEET 3 AND 3+	Thickness: 3mm Thermal Rating: Ug = 5.6 W/m ² K	Victorian to 1960
HERITAGE DRAWN SHEET 4.5	Thickness: 4.5mm Thermal Rating: Ug = 5.6 W/m ² K	Victorian to 1960
HERITAGE DRAWN ECO LAMINATED 3 and 3+	Thickness: 6.8mm Thermal Rating: Ug = 3.6 W/m ² K	Victorian to 1960
HERITAGE DRAWN ECO LAMINATED 4.5	Thickness: 8.3mm Thermal Rating: Ug = 3.6 W/m ² K	Victorian to 1960
HERITAGE DRAWN DOUBLE GLAZED 3, 3+ and 4.5	Thickness: from 10mm Thermal Rating: Ug = 1.5 W/m ² K	Victorian to 1960



Authentic | Handmade | Heritage | Restoration Glass

01509 235387
contact@tatraglass.co.uk

Duke Street
Loughborough
Leicestershire
LE11 1ED

Kew Gardens Orangery London, fitted with Tatraglass Heritage Drawn